

# MCS200

## Air Mass Flow Sensor

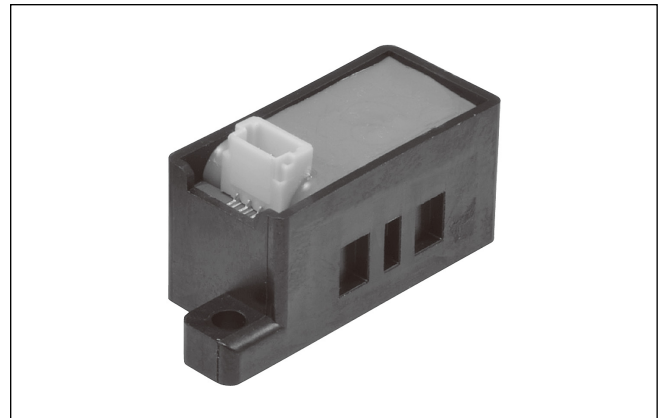
### Overview

The MCS200 is a compact, fast-response air/nitrogen mass flow sensor equipped with Azbil's own  $\mu$ F (Micro Flow™) sensor chip.

The MCS200 outputs the flow rate converted to standard conditions (20 °C, 1 atm), without the need for temperature or pressure compensation. The MCS200 offers wide rangeability and various flow rate ranges. It is ideal for flow measurements in numerous scientific and industrial applications.

### Features

- Compact and lightweight
- 28.2 × 10.0 × 12.1 mm (including mounting tabs and connector socket), just 5 g
- Can be installed in extra small mounting space using manifold mounting
- Fast response time 5ms max.
- Low power consumption



### Typical applications

Air samplers  
 Gas analyzers  
 Gas detectors  
 Pick and place detection for minute electronic/optical devices.

### Models

	Model number	Measurement range	Power	Measurement accuracy	Possible applications
Flow sensor models	<b>MCS200S9500</b>	0 to 500 mL/min	24 Vdc	3 % FS (accuracy of output voltage)	• Physics and chemistry equipment
	<b>MCS200S0003</b>	0 to 3 L/min			
Flow sensor models (5 Vdc power)	<b>MCS200L0001</b>	0 to 1 L/min	5 Vdc	3 % FS (accuracy of output voltage)	• Portable physics and chemistry equipment (battery- powered)
	<b>MCS200L0003</b>	0 to 3 L/min			

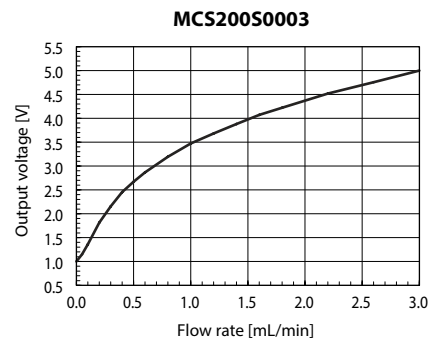
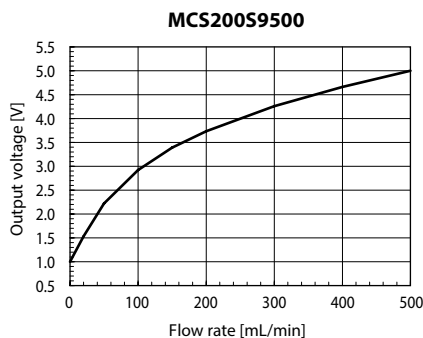
## Specifications

### • Flow sensor model (24Vdc power): MCS200S type

Model number	MCS200S9500	MCS200S0003
Connector type	No lock mechanism, upward cabling direction	
Measurable flow rate range	0 to 500 mL/min	0 to 3 L/min
	Conversion to volumetric flow rate at standard conditions of 20 °C and 1 atm	
Applicable gases *	Air and nitrogen. Gas must be dry and must not contain corrosive components (chlorine, sulfur, acid). Gas must also be free of dust and oil mist.	
Response time	5 ms max. (95 % response to a step change of flow rate)	
Output signal	1 to 5 Vdc (non-linear characteristics; refer to the standard output characteristics graph), allowable load resistance 1 MΩ or more	
Operating temperature range	-10 to +60 °C (for both ambient temperature and gas temperature)	
Storage temperature	-20 to +70 °C (without condensation)	
Operating humidity range	10 to 90 % RH (without condensation)	
Operating pressure range	-100 to +200 kPa (range for assured pressure characteristics: -70 to +200 kPa)	
Pressure resistance	300 kPa	
Measurement accuracy (output voltage)	±3 % FS max.	±3 % FS max.
	Conditions: average of data recorded for 2 s or more with a sampling cycle of 20 ms or less. Figures for "% FS" are for a full-scale output voltage span of 4 V (= 5 - 1 V).	
Standard flow rate (output voltage) characteristics	0 mL/min: 1.00 ±0.12 V 100 mL/min: 2.83 ±0.12 V 300 mL/min: 4.23 ±0.12 V 500 mL/min: 5.00 ±0.12 V	0 L/min: 1.00 ±0.12 V 0.5 L/min: 2.68 ±0.12 V 1.5 L/min: 3.98 ±0.12 V 3.0 L/min: 5.00 ±0.12 V
Repeatability	±1.0 % FS max.	±1.0 % FS max.
	Conditions: continuous measurement under the same conditions of power voltage, fluid temperature, fluid humidity, ambient temperature, gas supply pressure, and flow rate	
Pressure characteristics	±0.01 % FS/kPa	±0.02 % FS/kPa
	Output voltage when set for the -70 to +200 kPa pressure range, at 1 atm (101.325 kPa).	
Temperature characteristics	±0.25 % FS/°C	±0.2 % FS/°C
	Output voltage when set for the -10 to +60 °C temperature range, at 20 °C.	
Allowable voltage fluctuation range	21.6 to 26.4 Vdc	
Power fluctuation effects	For 24 Vdc power, -2 % FS max. at 21.6 Vdc and +2 % FS max. at 26.4 Vdc	
Current consumption	12 mA max.	
Warm-up time	Time required for output stabilization (with a continuous stable flow rate): To within ±5 % FS of final voltage value: momentary To within ±1 % FS of final voltage value: 30 s max.	
Dielectric strength	500 Vac for 1 min or 600 Vac for 1 s, between each external connector terminal and body	
Insulation resistance	50 MΩ (500 Vdc megger) between each external connector terminal and body	
Mounting method	Mounted on a manifold with the provided gasket and M2 screws. Tighten screws to a torque of 0.15-0.2 N·m.	
Material	Parts exposed to gas: PPS resin (flow path), ceramic (circuit board), brass (connecting part), fluorine rubber (gasket), and silicone rubber (circuit board upper coating)	
Mounting position	Gasket surface should not face upward.	
Mounting conditions	Install a filter on the upstream side of this device to trap dust and oil mist 10 μm or larger in size.	
Vibration resistance	10 to 55 Hz, 1.5 mm peak-to-peak amplitude, 2 hours each in XYZ directions	
Weight (mass)	Approx. 5 g (without cable)	
Electrical connection (dedicated connector)	Dedicated cable with connector (sold separately): <b>81446888-001</b> (2 m), <b>81446888-002</b> (3 m) MCS side: <b>BM03B-SRSS-G-TB</b> , manufactured by J.S.T. Mfg Co., Ltd. Other side: <b>SHR-03V-S-B</b> (housing) and <b>SSH-003GA-P0.2</b> (contacts), manufactured by the same company.	

\* Use an upstream filter capable of eliminating particles of dust and mist 10 μm and larger, so that foreign matter does not enter the intake passage. If there is a possibility of rust, water droplets, or oil mist entering the device, provide a strainer, mist trap, etc. and periodically inspect and replace it.

### Standard flow rate characteristics (typical)

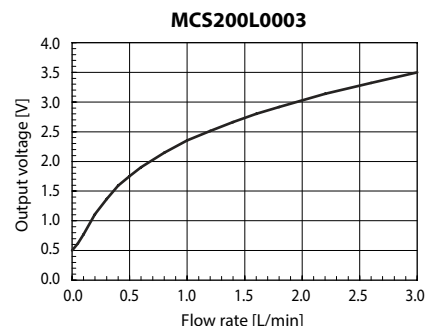
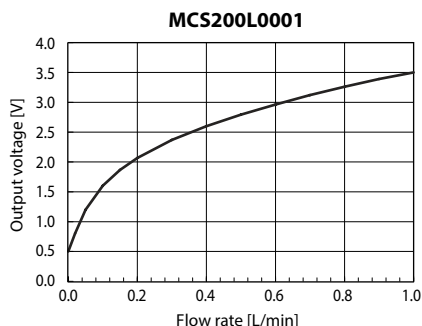


• Flow sensor model (5 Vdc power): MCS200L type

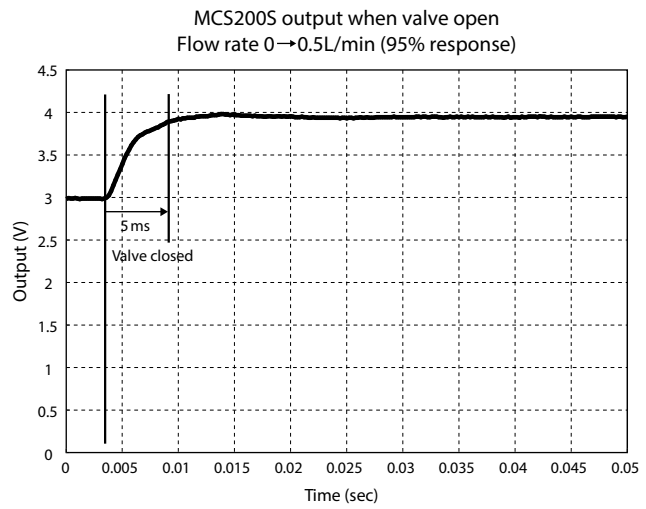
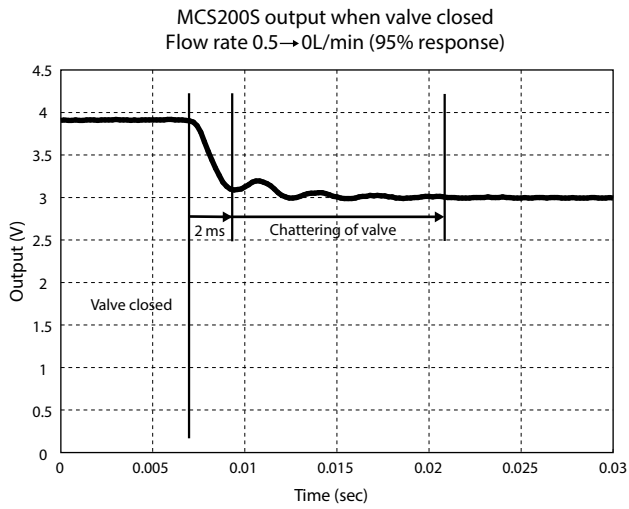
Model number	MCS200L0001	MCS200L0003
Connector type	No lock mechanism, upward cabling direction	
Measurable flow rate range	0 to 1 L/min	0 to 3 L/min
	Conversion to volumetric flow rate at standard conditions of 20 °C and 1 atm	
Applicable gases *	Air and nitrogen. Gas must be dry and must not contain corrosive components (chlorine, sulfur, acid). Gas must also be free of dust and oil mist.	
Response time	300 ms max. (95 % response to a step change of flow rate)	
Output signal	0.5 to 3.5 Vdc (non-linear characteristics; refer to the standard output characteristics graph), allowable load resistance 1 MΩ or more If the power supply voltage is 5 Vdc or less, the output voltage range is 0.5 to (v - 1.5) Vdc (where v is the power supply voltage). Example: If the power supply voltage is 4.8 Vdc, the output voltage upper limit is 3.3 V (= 4.8 - 1.5).	
Operating temperature range	-10 to +60 °C (for both ambient temperature and gas temperature)	
Storage temperature	-20 to +70 °C (without condensation)	
Operating humidity range	10 to 90 % RH (without condensation)	
Operating pressure range	-100 to +200 kPa (range for assured pressure characteristics: -70 to +200 kPa)	
Pressure resistance	300 kPa	
Measurement accuracy (output voltage)	±3 % FS max.	±3 % FS max.
	Conditions: average of data recorded for 2 s or more with a sampling cycle of 20 ms or less. Figures for "% FS" are for a full-scale output voltage span of 3 V (= 3.5 - 0.5).	
Standard flow rate (output voltage) characteristics	0.0 L/min: 0.50 ±0.09 V	0.0 L/min: 0.50 ±0.09 V
	0.3 L/min: 2.37 ±0.09 V	0.5 L/min: 1.75 ±0.09 V
	0.5 L/min: 2.79 ±0.09 V	1.5 L/min: 2.73 ±0.09 V
	1.0 L/min: 3.50 ±0.09 V	3.0 L/min: 3.50 ±0.09 V
Repeatability	±1.0 % FS max.	±1.0 % FS max.
	Conditions: continuous measurement under the same conditions of power voltage, fluid temperature, fluid humidity, ambient temperature, gas supply pressure, and flow rate	
Pressure characteristics	±0.02 % FS/kPa	±0.02 % FS/kPa
	Output voltage when set for the -70 to +200 kPa pressure range, at 1 atm (101.325 kPa).	
Temperature characteristics	±0.25 % FS/°C	±0.2 % FS/°C
	Output voltage when set for the -10 to +60 °C temperature range, at 20 °C.	
Power supply voltage	5 Vdc, ripple of 0.2 % max. (at 5 Vdc power)	
Allowable voltage fluctuation range	5 ±0.25 V (5 V ±5 %)	
Power fluctuation effects	Output voltage signal is proportional to the supply power voltage. Example 1: The relationship of an output voltage (Vo) at a 5 Vdc power supply voltage to an output voltage (V) at a power supply voltage of u is given by: $V = (u/5) \times Vo \dots (4.75 \leq u \leq 5.25)$ Example 2: If a power supply voltage of 5 Vdc results in an output voltage of 3 Vdc, a power supply voltage of 4.8 Vdc will result in an output voltage of 2.88 Vdc: $2.88 V = (4.8/5) \times 3.$	
Current consumption	6 mA max.	
Warm-up time	Less than 1 second for output voltage to stabilize to within ±1 % FS (with continuous stable flow rate)	
Dielectric strength	500 Vac for 1 min or 600 V for 1 s between each external connector terminal and body	
Insulation resistance	50 MΩ (500 Vdc megger) between each external connector terminal and body	
Mounting method	Mounted on a manifold with the provided gasket and M2 screws. Tighten screws to a torque of 0.15-0.2 N·m.	
Material	Parts exposed to gas: PPS resin (flow path), ceramic (circuit board), brass (connecting part), fluorine rubber (gasket), and silicone rubber (circuit board upper coating)	
Mounting position	Gasket surface should not face upward.	
Mounting conditions	Install a filter on the upstream side of this device to trap dust and oil mist 10 μm or larger in size.	
Vibration resistance	10 to 55 Hz, 1.5 mm peak-to-peak amplitude, 2 hours each in XYZ directions	
Weight (mass)	Approx. 5 g (without cable)	
Electrical connection (dedicated connector)	Dedicated cable with connector (sold separately): <b>81446888-001</b> (2 m), <b>81446888-002</b> (3 m) MCS side: <b>SM03B-SRSS-G-TB</b> , manufactured by J.S.T. Mfg Co., Ltd. Other side: <b>SHR-03V-S-B</b> (housing) and <b>SSH-003GA-P0.2</b> (contacts) manufactured by the same company.	

\* Use an upstream filter capable of eliminating particles of dust and mist 10 μm and larger, so that foreign matter does not enter the intake passage. If there is a possibility of rust, water droplets, or oil mist entering the device, provide a strainer, mist trap, etc. and periodically inspect and replace it.

Standard flow rate characteristics (typical)



## 5 ms or less fast response characteristics

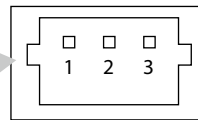


## Connection

### ● MCS200S/L



Top view of the sensor



Applicable connectors, made by J.S.T. Mfg Co., Ltd.:

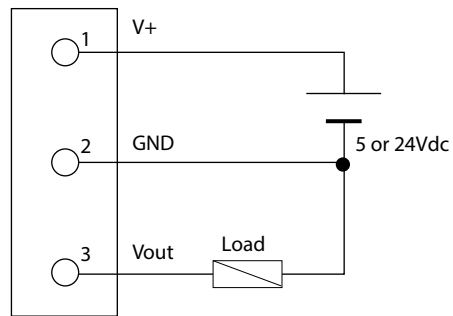
Housing: SHR-03V-S-B

Contact pins: SSH-003GA-P0.2

Pin No.	Signal name	Description
1	V+	Power supply +
2	GND	GND
3	Vout	Sensor output

Note: Not insulated between inputs and outputs

### Recommended connection example

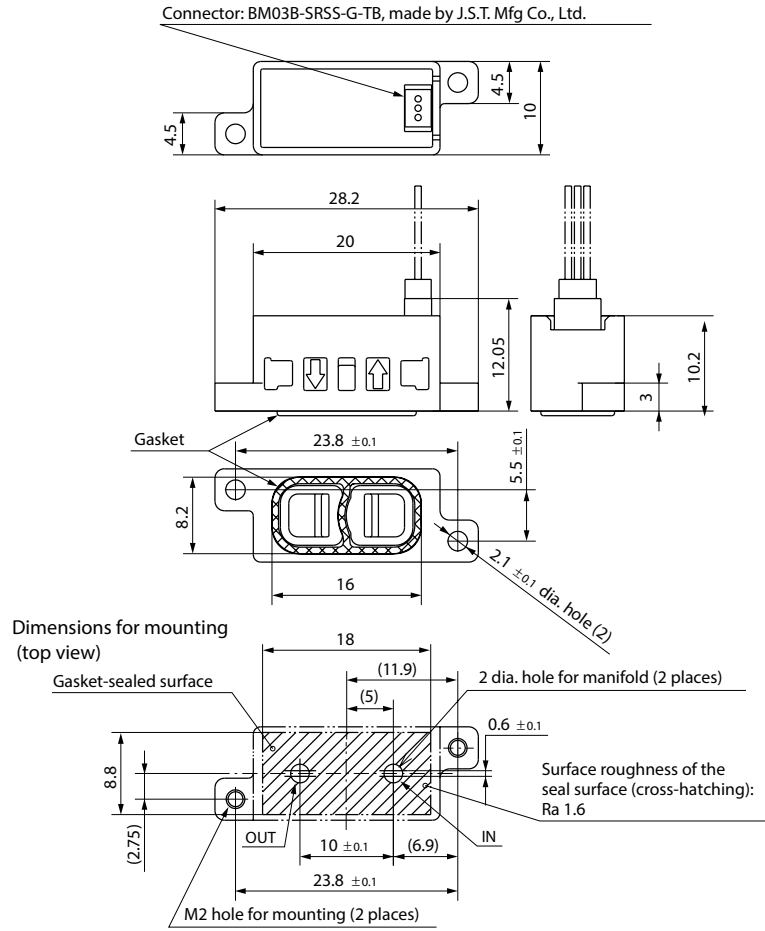


Note: Allowable load resistance is 1 kΩ min.

## External dimensions

- MCS200S/L

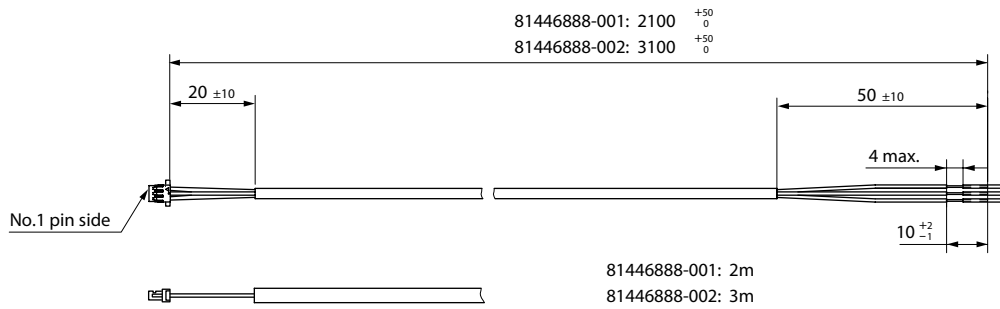
(Unit: mm)



## Dimensions for dedicated connector cables

- MCS200S/L (81446888-\*\*\*)

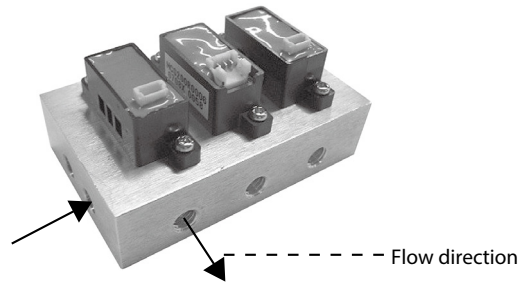
(Unit: mm)



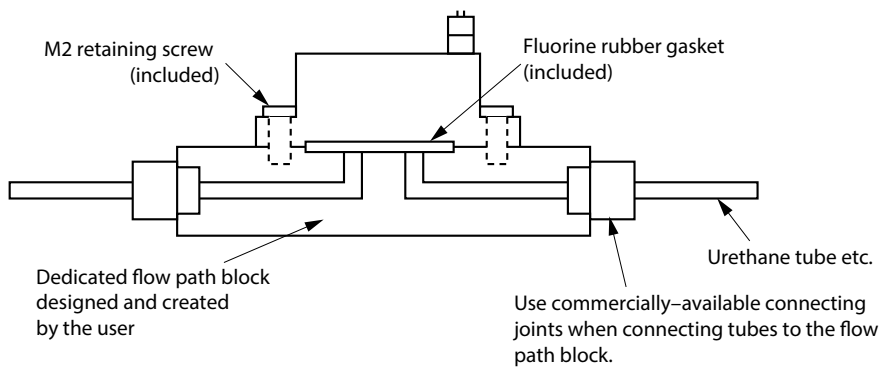
## Mounting and Piping methods

When there is not enough space for installation of a flow meter (connecting joint volume + space for laying the pipes), the MCS200, which is mounted on a manifold (a flow path block), can be installed. This mounting method requires little mounting and piping space.

- Notes
1. A manifold like the one shown below should be prepared by the user.
  2. Flow paths are bored into the manifold block (see the diagram below).



**Mounting example of the MCS200**



**Sample composition of a flow path block unit**

## Handling Precautions

- 1) This sensor is a precision instrument. To avoid damaging it, do not drop it or otherwise subject it to impact.
- 2) Before using this device, give due consideration to safety issues.
- 3) Use an upstream filter capable of eliminating particles of dust or mist 10  $\mu\text{m}$  and larger in size, so that foreign matter does not enter the intake passage. If there is a possibility of rust, water droplets, or oil mist entering the device, provide a strainer, mist trap, etc. and periodically inspect and replace it. If foreign matter enters the intake passage, the sensor may be damaged. Notice, too, that foreign matter might enter the device from the outlet side due to reverse flow. If reverse flow is a possibility, provide a reverse flow protection unit or a filter on the outlet side like the one used upstream.
- 4) Do not use this device outside of the operating pressure range. Also, do not subject this device to pressure above the pressure resistance. Doing so might damage the device.
- 5) Be sure to use this device within the specified flow rate range. If the flow rate exceeds 120 % of the upper limit, the output and display may reflect a flow rate lower than the real one. To prevent excessive flow rate, design instrumentation that includes, as appropriate, supply pressure management, a throttle valve, etc.
- 6) For flow-rate control, appropriate redundant design is necessary to avert possible danger if abnormal (excessive or extremely small) output signals are produced by the flow meter.
- 7) Do not allow a flow rate of 3 times the measurement range or more. (Do not allow a flow rate of 12 L/min or more.) Doing so may damage the sensor.
- 8) Mount the device securely to prevent vibration.
- 9) When installing, avoid mounting the device in locations like the following:
  - a) Where the ambient temperature falls below  $-10\text{ }^{\circ}\text{C}$  or rises above  $60\text{ }^{\circ}\text{C}$
  - b) Where ambient humidity exceeds 90 % RH
  - c) Locations subject to sudden changes in temperature and condensation
  - d) Locations subject to corrosive gases and flammable gases
  - e) Locations containing abundant conductive substances (e.g., dust, salt or iron dust), water droplets, oil mist or organic solvents
  - f) Locations subject to vibration or shock
  - g) In direct sunlight
  - h) Locations splashed by water or rain
  - i) Locations subject to splashing by oil, chemicals, or other liquids
  - j) Where strong magnetic or electrical fields are generated
- 10) Be sure to check that the wiring is correct before turning the power ON. Incorrect wiring might cause damage or malfunction.
- 11) Do not remove the case or disassemble the device. Doing so may cause malfunction.
- 12) This is a CE-marked product. Be sure to provide lightning surge protection, since it is not built in.

Please read "Terms and Conditions" from the following URL  
before ordering and use.  
<https://www.azbil.com/products/factory/order.html>

*Specifications are subject to change without notice.*

**azbil**

---

## Azbil Corporation

Advanced Automation Company

1-12-2 Kawana, Fujisawa  
Kanagawa 251-8522 Japan  
URL: <https://www.azbil.com/>

1st edition: Nov. 2017  
4th edition: Jun. 2021

*No part of this publication may be reproduced or duplicated  
without the prior written permission of Azbil Corporation.*